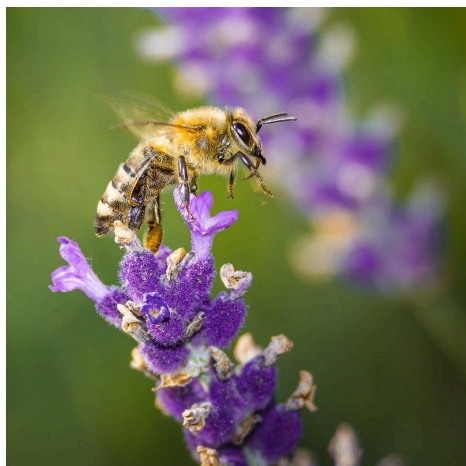


Coffee * Tea * Smoothie

We specialize in crafting drinks ~ let us know your requests and we can do the rest

Seasonal drinks

Latte Drinks hot - iced - blended



Lattes & Mocha's hot - iced - blended

Lavender Honey Latte, Carmel Honey Bee

Lavender London Fog

Cloud Drinks Whipped topping - with/out coffee

Galentines Cloud, Irish Mint Cloud

Cold Brews

Irish Cream Cold Brew, Heartbreak Cold Brew

Lotus Drinks

Cocktail Dress, Lavender Haze, Pot O Gold

House blend Coffee

House Blend Signature Drip mug 12oz 16oz refill = free

This blend is designed to be a crowd pleasing coffee that stretches the palate. The cup has notes of green apple, raisins and Baker's chocolate with a medium body. This is a fantastic "all day drinker" that is approachable and consistent.

Get a carafe (8 cups) for you and your friends for \$8!

Single Origin Seasonal Pour Over mug 12oz 16oz

Features our seasonal premium hand selected single origin coffees brewed to order with at Kalita Wave on our Marco SP9 Brewer. Unlike large batch drip brewing, the pour-over brewing method allows the barista full control of the brewing process from start to finish, revealing the coffee's subtle nuances that may not be present in large batch brewing. Try a single origin brew-to-order pour over today.

Do not put on DT MENU board, need to keep on menu for google menu & website

Espresso Bar (also available in decaf)

Double Espresso

We proudly feature Oak Cliff Coffee Roasters "Hidden Espresso" as our house espresso. This Northern Italian style espresso is a blend of coffee from Brazil, Honduras and Ethiopia. Look for notes of strawberries and milk chocolate with a rich syrupy body. This espresso is a real treat!

2 oz

Depth Charge

Oak Cliff Espresso shot into our house blend coffee, certainly a jump start to your morning.

12 oz

16 oz

Cappuccino

A single shot of our Cottonwood Espresso, artfully combined with thick, creamy and velvety textured steamed milk. A true classic!

6 oz

Cortado

A double shot of our Hidden City Espresso, artfully combined with thick, creamy, and velvety textured steamed milk in a rocks glass. A spanish classic!

5 oz

Latte Caramel Macchiato

Our Cottonwood espresso shot poured over milk, and caramel syrup for that extra sweetness. A favorite for many of our Backroaders. (Available iced 16 oz)

16 oz 20 oz

Turtle Mocha

Espresso shot poured over your choice of milk and our combination of caramel, nut and chocolate to make the true turtle mocha experience for you.

16 oz 20 oz

Americano

Made popular in World War II when American G.I.'s were stationed in Italy. Baristas add hot water to two ounces of espresso, for a similar strength as drip coffee but with those unmistakable notes found only in espresso.

12 oz 16 oz

16 oz iced

Mocha

Two shots of espresso melted with your choice of chocolate sauce (white, milk or dark chocolate) and combined with creamy, velvety textured steamed milk.

12 oz 16 oz

Espresso Macchiato

A true classic! One shot of our Cottonwood Espresso, topped with just a dollop of milk foam.

3oz:

Breve

Crema frothed to perfect temp then our Cottonwood Espresso shot is all the Breve needs.

12 oz 16 oz

Cafe Con Miel

This drink begins with the sweet taste of honey, a shot of our Cottonwood Espresso, hot frothed milk and topped with cinnamon. This is a Spanish classic.

12 oz 16 oz

Additional charges

SYRUPS

SAUCE

ALTERNATIVE MILK

Cold Drinks

Cold Brewed Iced Coffee

Our signature blend, slow cold brewed for 12 hours via the Toddy cold brewing method. This artisan brewing method produces less acid, and much smoother and complex taste than traditional iced coffee! You won't find this labor intensive brewing method in a big chain shop!

16 oz 20 oz

Hand Shaken Summer Teas

Your choice Rishi organic black tea, blue jasmine or raspberry green tea combined with ice and shaken to order.

16 oz 20 oz

Iced Chai Latte

Rishi's organic masala chai tea + cold milk + ice. Our chai latte is a perfect balance between savory, sweet and spice.

16 oz 20 oz

House Made Lemonade

Made with House Made Simple syrup and freshly squeezed lemons, this Handmade Lemonade is crisp, refreshing and has the perfect balance of tart and sweet in one icy-cool glass.

20 oz

Sunberry Tea

If you like sun tea and Strawberries acai you'll love our Backroads Sunberry Tea!

16 oz 20 oz

Refreshers

Real fruit juice and green coffee extract is the only caffeine in these refreshing drinks.

Watermelon-cucumber mint

Strawberry Acai

16 or 20 oz

Italian Cream Soda

Soda water + choice of syrup + cream optional

20 oz \$4

Backroads Blended Drinks

Snickerdoodle Cloud

Touch of cinnamon, vanilla and white chocolate mixed in a cold whipped topping and toffee sprinkles on top

20 oz \$4.90

Cookies and Cream Cloud

Just like our favorite cookie, oreo in a delicious drink form. A creamy drink with a cookies and cream sauce. Chocolate oreo crunch to top it off.

20 oz \$5.20

Brian's PB & Caramel Cloud

Peanut butter and milk chocolate combination is a delectable taste in itself but why not add caramel to make an amazing drink.

20 oz \$4.90

Frozen Hot Chocolate

A drink that is hot on the market but refreshingly cold in the hands. Your full flavored traditional hot chocolate with whipped topping, chocolate drizzle & mini chocolate kisses on top.

20 oz \$4.25

White Raspberry Cloud

Part of our creamy blend with white chocolate sauce and raspberry syrup, and drizzled with raspberry sauce on whipped topping.

20 oz \$4.90

Non-Coffee + Kid Drinks

London Fog

A smooth drink that packs a lot of flavor. Earl grey tea steeped with steamed milk and vanilla. A need to try drink.

12 oz 16 oz

Chai Latte

Creamy blend of velvety textured steamed milk, organic Rishi masala chai tea, lightly dusted with cinnamon. Our Chai latte is a perfect balance between savory, sweet and spice.

Mug or 12 oz 16 oz

Organic Hot tea Rishi loose leaf tea (in house only)

Peach Blossom-white tea (low caffeine)

English Tea

Chamomile Medley botanical blend (no caffeine)

Blue Jasmine green tea (low caffeine),

Raspberry Green Tea (low caffeine),

or black tea - Earl Gray (mid caffeine)

Hot Tea's to go only- Earl Grey Tea, Jasmine Green Tea, Strawberry Tulsi

12 oz to go w/sachet

Matcha Latte

Green tea Rishi Matcha frothed with coconut milk for a rich creamy sweet green tea latte..

Mug or 12 oz 16 oz

Farmhouse Hot chocolate

Made with Dark Chocolate combined with creamy, velvety textured steamed milk and a dollop of whipped cream and mini chocolate chips. It's not your Grandma's hot chocolate.

Kids \$2.85

Mug or 12 oz 16 oz

Farmhouse Apple Cider (seasonal)

Organic 100% Apple Juice + Housemade Cinnamon Syrup, and caramel sauce steamed just right for your little one and topped with delicious hand made Vanilla Bean whipped cream and a dust of cinnamon.

Kids, 12 oz, 16 oz

Smoothies (added protein)

Organic Smoothies (add banana, van/choc/straw protein)

100% fresh fruit smoothies blended with ice & milk for your daily dose of deliciousness. These are GF, Vegan & Lactose free(if ordered with alternate milk or water).

Aloha + antioxidants

16 oz

20 oz

Strawberry + prebiotic

Other drinks available: in merchandiser, dt coke, coke, dt mtn dew, Sprite, S. Pellegrino, bottle water